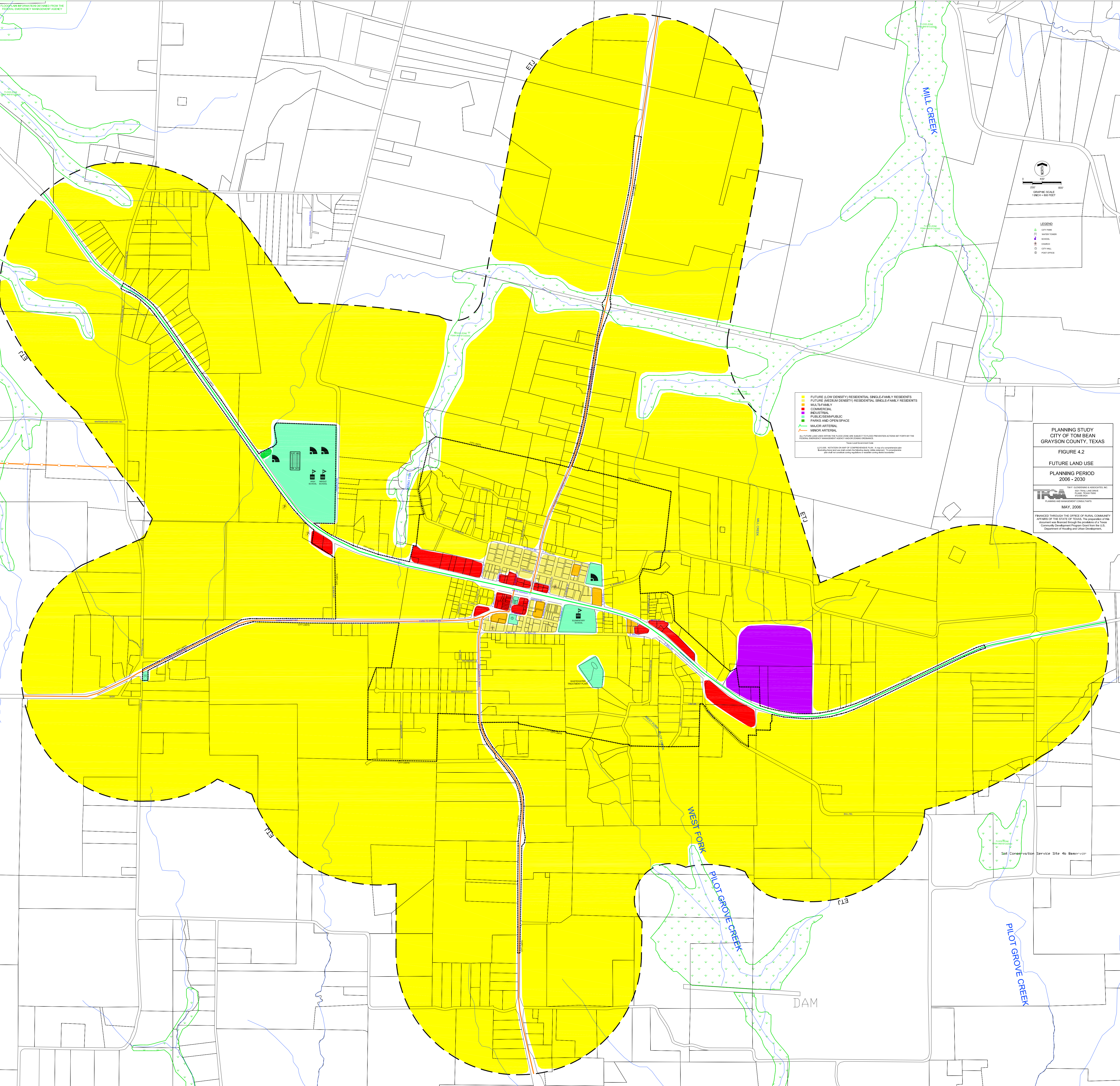


FLOODPLAIN INFORMATION OBTAINED FROM THE REGIONAL EMERGENCY MANAGEMENT AGENCY



■ FUTURE (LOW DENSITY) RESIDENTIAL SINGLE-FAMILY RESIDENTS
 ■ FUTURE (MEDIUM DENSITY) RESIDENTIAL SINGLE-FAMILY RESIDENTS
 ■ COMMERCIAL
 ■ INDUSTRIAL
 ■ PUBLIC/SCHOOL/PUBLIC
 ■ PARKS AND OPEN SPACE
 — MAJOR ARTERIAL
 — MINOR ARTERIAL

ALL FUTURE LAND USES WITHIN THE FLOOD ZONE ARE SUBJECT TO FLOOD PREVENTION ACTIONS SET FORTH BY THE REGIONAL EMERGENCY MANAGEMENT AGENCY (REMA) FLOOD ZONE ORDINANCES.
 © 2006, WITH PERMISSION FROM THE OFFICE OF RURAL COMMUNITY AFFAIRS OF THE STATE OF TEXAS. THE PREPARATION OF THIS DOCUMENT WAS FINANCED THROUGH THE PROVISIONS OF A TEXAS COMMUNITY DEVELOPMENT PROGRAM GRANT FROM THE U.S. DEPARTMENT OF HOUSING AND URBAN DEVELOPMENT.

PLANNING STUDY
CITY OF TOM BEAN
GRAYSON COUNTY, TEXAS
FIGURE 4.2
FUTURE LAND USE
PLANNING PERIOD
2006 - 2030

T.M.F. ENGINEERING & ASSOCIATES, INC.
 8001 HILL LANE, SUITE 100
 P.O. BOX 12000
 HOUSTON, TEXAS 77212-0000
 PLANNING AND MANAGEMENT CONSULTANTS
 MAY, 2006

FINANCED THROUGH THE OFFICE OF RURAL COMMUNITY AFFAIRS OF THE STATE OF TEXAS. THE PREPARATION OF THIS DOCUMENT WAS FINANCED THROUGH THE PROVISIONS OF A TEXAS COMMUNITY DEVELOPMENT PROGRAM GRANT FROM THE U.S. DEPARTMENT OF HOUSING AND URBAN DEVELOPMENT.